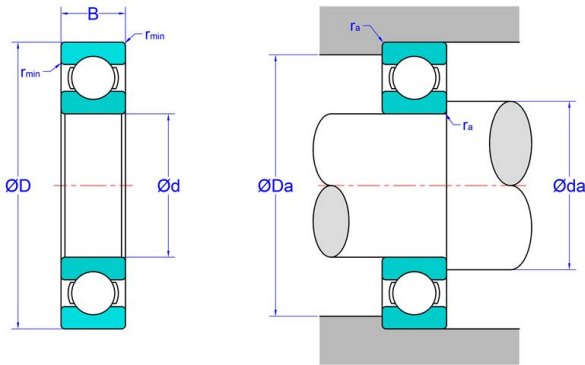




# BEARING PRECISION AXLE CORP.



15 mm x 35 mm x 11 mm 15 mm x 35 mm x 11 mm 241/560 ECK30J/W33 The Most Novel Spherical Roller Bearing 560\*920\*355mm

Bearing No. 6202c3

Enclosure	Open
Bore Type	Cylindrical Bore
Configuration	Single Row
Weight	0.045 kg
d	15 mm
D	35 mm
B	11 mm
Fillet Radius/Chamfer	0.6 mm
Dynamic Load Rating	7,650 N
Static Load Rating	3,700 N
Limiting Speed - Grease	20,000 rpm
Limiting Speed - Oil	24,000 rpm
Factor fo	13.1
Radial Clearance	0.011 to 0.025 mm
da (min)	20 mm
Da (max)	30 mm
ra (max)	0.6 mm

6202c3 Bearing 2D drawings and 3D CAD models